



WELCOME

2025 has been a mixed year. The Gala Day was a success again, even though the rain poured down most of the day. Still, we had a good turnout and it was enjoyed by many of our local residents and, I'm sure, quite a few from further afield. Once more we are indebted to those who put in so much work to make this day a success.

We have a new school extension underway for the benefit of not only our young folks but for the larger community with its gym facilities planned to be open to the public. To our knowledge completion is running a bit late but still progressing to be opened in 2026.

Our roads have been dug up for a variety of reasons and traffic flow through the village disrupted, potholes have come and gone (yes, they have) but the issue of parking still remains a major problem, especially at peak periods. We are assured that NLC is looking at the situation.

A grand time was had by all who attended what should have been the switching on of our 'living' Christmas tree lights but circumstances were such that they were delayed, but only by a day or so. We are again grateful for the organisers for doing this for our community.

WE'RE VERY LUCKY

Our community is very fortunate to have people such as those who work so tirelessly for it, such as the Northern Corridor Community Volunteers who provide and maintain the troughs and baskets around our villages, clean up the mess created by others and keep our villages in good order.

A big thanks again to you all, and may 2026 bring success in all your ventures.

Brian Elder

Chair, Chryston Community Council



OUR LIVING XMAS TREE

As mentioned in our introduction, we now have our 'Living' Christmas tree in Moor Park. Yes, it is two metres high, not two feet.

Some have pointed out that it is very small, but just think, fir trees grow on average between 30-46 cm (12-18 inches) each year. Before we know it, in 5 years it will have doubled in size and we will be trying to find the money to pay for the cherry picker to put the lights up.

A big thank you to everyone involved in bringing this about, we are sure it will be a big feature in years to come.

COMMUNITY NOTICE BOARDS

We have four notice boards in our area: two in Mt Ellen, one in Mollinsburn and one in Chryston. If you want to post a notice for a community event please email chrystoncommunity@gmail.com

PLEASE GIVE PLENTY OF NOTICE OF ANY EVENT.

All notices must be no bigger than A4.
We do not post commercial adverts and all adverts must be approved by the Community Council.



GARDENING NEWS

CHRYSTON COMMUNITY GARDEN

Chryston Community Garden would welcome new volunteers to their Friday morning sessions, no experience necessary. Interested? Get in touch with them at CommunityGarden@btinternet.com

CHRYSTON & MUIRHEAD PLANTING PROJECT

Chryston Community Council in partnership with Northern Corridor Community Volunteers

Our community living Christmas tree has arrived and been planted in Moor Park. The community will be able to decorate and enjoy our new tree for many years to come. This initiative is in collaboration with local community groups.

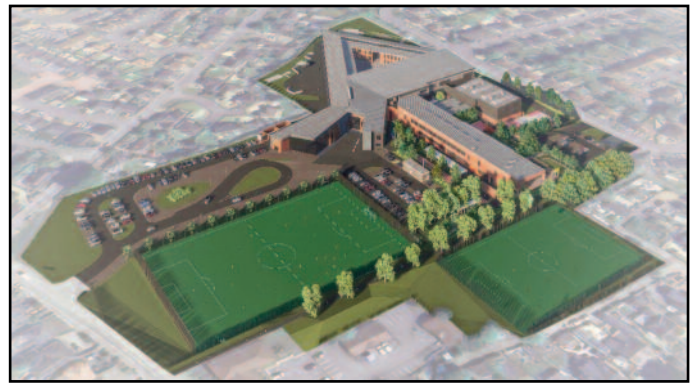
Local business owners' superb Christmas shop window displays are helping to bring that festive feeling to the village.

Our Community Council, in partnership with the Northern Corridor Community Volunteers (NCCV), are already preparing for spring 2026, with plans including the refurbishment and replanting of two large ex council planters located in Moor Park.

Also, if grants permit, our volunteers intend to place new planters at the Jamieson Medical Practice to brighten up this area.

Do you want to get involved?

The work of the group is varied and the NCCV are always looking for more volunteers to help with our planting projects. If you're interested in getting involved please text/call Stuart on **07876 513719** or visit www.facebook.com/groups/nccvols or chrystoncommunity@gmail.com



SCHOOL UPDATE

The following information has been taken from BAM's Chryston High School Extension Newsletter, Dec. 2025.

PROGRESS TO DATE

Construction of the extension to the existing facilities is well underway with foundation, drainage and steel frame almost complete. Works to the existing 11-a-side pitch are now nearing completion with the pitch being available for education and community use in the new year.

UPCOMING DEVELOPMENTS

Works will stop from Friday 19th December and commence again Monday 5th January. The site will be checked in advance of this to ensure it is fully secure around the perimeter, and all materials are safely stored in case of any severe weather we may have during this period. We have constant security monitoring which will continue while the site is closed over this break.

We will shortly have the main steel frame of the building completed with the roofing and envelope works following behind, you will see the outline of the new building, and early into 2026 will start to see the completed look of the building exterior as it progresses.

Chryston Community
Council would like to
wish you a very
Merry Christmas and
a Happy New Year

CCC's Local Place Plan Consultation

The public consultation for content and support for the CCC work on the local place plan has almost been completed. The nine month process has focused on measures to improve the environment from a noise, safety and accessibility point of view.

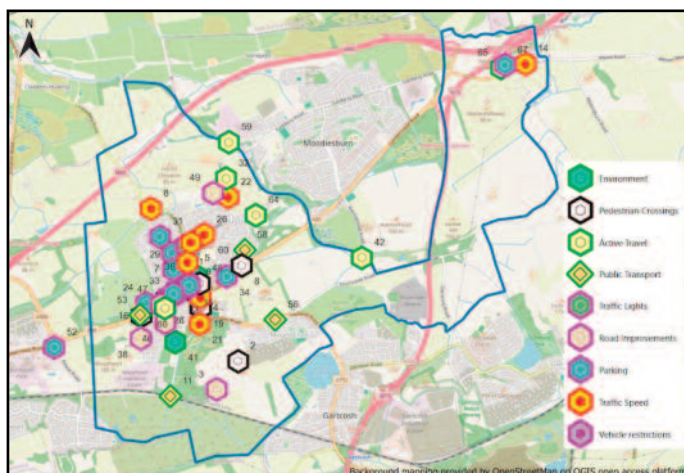
Engagement with community included maps in various locations, such as the library, as well as an online interactive map to gather your suggestions. This approach was taken to ensure the consultation was equitable in the gathering of opinions in person and via the internet. These suggestions were then checked for resident support via a secondary consultation.

In each of the consultations the residents of Chryston, Muirhead and Mollinsburn have provided suggestions to improve the quality of life and environment in the Community Council area.

These have now been mapped (*see figure below*) and will be presented under the headings:

RESIDENTIAL IMPROVEMENTS

- Active Travel
 - Promote and facilitate active travel
 - More crossing points
 - Improve quality of footways
- Parking
 - Introduce designated parking zones
 - Limited duration zones
- Traffic Speed
 - 20 MPH zone
- Vehicle Restrictions
 - Restrictions on deliveries
 - Reduce HGV Through Traffic



ROAD IMPROVEMENTS

- Traffic Lights
- Link Roads

ENVIRONMENT

- Protect remaining Green Space
- Bring all play areas up to standard

OTHER

- Park and Ride

These headings have allowed us to group specific suggested measures that you submitted to present them as a logical suite of actions. It is hoped that these capture the concerns of residents and provides useful information to the local council to inform future development decisions and actions to improve the area. Any comments that were submitted but fall outwith the Place Plan remit will be flagged to North Lanarkshire Council by CCC. This final phase of consultation will present the findings with detailed mapping alongside the level of support for each measure prior to being submitted to NLC.

It is hoped that this will be published in the next couple of weeks. Promotion of the final consultation will be via the Facebook page, with the document being sent to Elected Members and neighbouring Community Councils. If you have further comments after it has been published, please email Chryston Community Council directly at secretary@chrystoncommunitycouncil.org.uk



Our local bobbies

As well as policing our area, our two police officers – PC Laura Dudgeon and PC Neil McBain from the Northern Corridor Community Policing Team – provide regular updates on the crime situation in our areas. These are posted on all local notice boards and can be found on our website. We are grateful for the time they give to keeping us up-to-date and for the work they do to keep our community as safe as possible.